

Beyond Enterprise

Situation Management Edition

Beyond packs the features of a Physical Security Integration Management System – filtering the mess of data overload that exists in Enterprises and using features such as Event Management & Monitoring, Smart Workflows through our Smart Rules engine, third party integrations, smart navigation of buildings and facilities and Smart Alerts interface – we enable companies to have much greater situational awareness of their physical environment and security operations and increase the efficiency of remote operators. With Beyond – enterprises will also reduce response times and address critical situations 40% faster. With multi-language support.

Capabilities at a Glance



Integration of different security, enterprise and sensor systems into one. For example, Letcare, Vcare integration in Unified Operations into one platform.



Integration with online maps, GIS systems and building layouts. Display multiple coordinates and layers in each coordinate with a system that can guide.



Quick deployment with user interface for pre-integrated technologies.



Supports Windows Application and Browser-Based Application which can analyze large data and ready to create a picture visualization



Increase collaboration between operators and situation managers.



REST APIs and SDKs for a fully open platform.



Smart alarm and event handling that is fully customizable. Including alert and show SOPs set up by system operator.



Proven and tested in deployments across Southeast Asia.



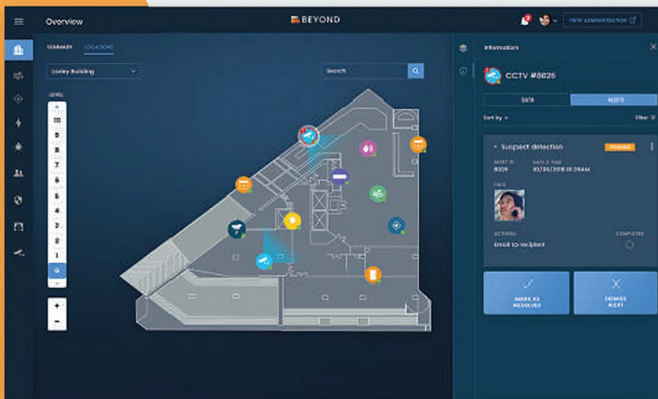
Sound and visual alerts to ensure operator vigilance.
Command the automatic emergency sound notification system



Superior suspect tracking technology in combination with Facial Recognition to track suspect trajectories.

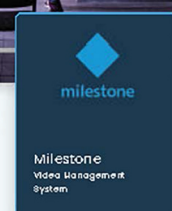
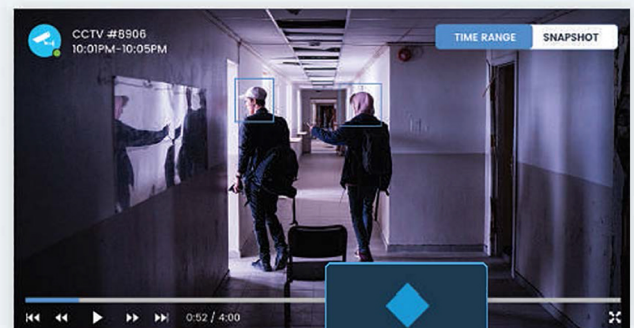
Centralized Command & Control

Beyond brings together disparate systems and technologies into one easy to use unified interface (GUI) so that your enterprise does not have to learn different applications and operations. Training and upgrades become easy and scalable – pulling in video, surveillance and IOT sensors from multiple facilities under your care into one central location – thus reducing the cost of manpower, centralizing your view of all your facilities and branches – and ensuring that you always have a real time view of all your assets and locations in one place.



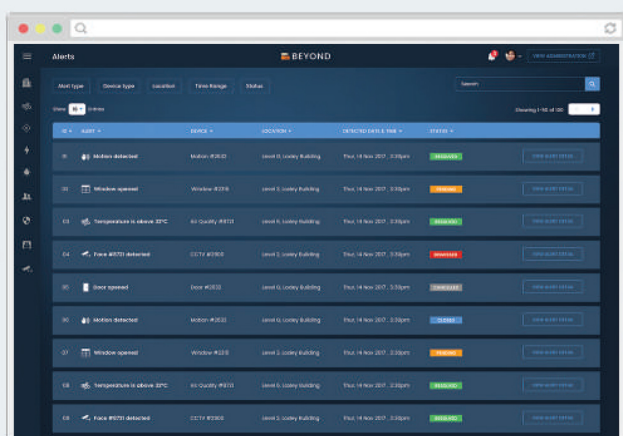
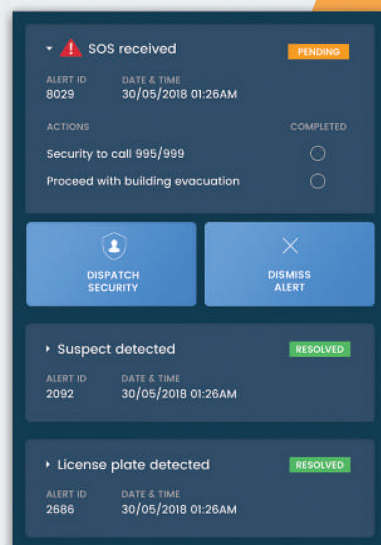
Video Management & CCTV

Beyond integrates with major video management systems in the market including Milestone, Bosch, Mirasys, Genetec, Verint – and provides its own video management software module – with Failover and High Availability support. Our default CCTV and Video Management choice functions are ONVIF compatible and supports 4000+ models of network cameras and network video servers from over 140+ manufacturers, as well as fully ONVIF Profile S compliant – including but not limited to Samsung, Hikvision, Milesight, Navtech, Sightlogix, Vivotek, OPGAL, Panasonic, Pelco, Dahua, FLIR PT602CZ etc.



Smart Alerts

With a specialized alerts dashboard – greater situational awareness is achieved through the combination of different and sources. When an alert is triggered and brought to the attention of the operator – relevant automation, sensor and visual analytic data is combined into one alert interface to give the operator and truly holistic view of the event that has been triggered. This will allow for remote operators to make faster, more accurate decisions in response to events triggered by the system.

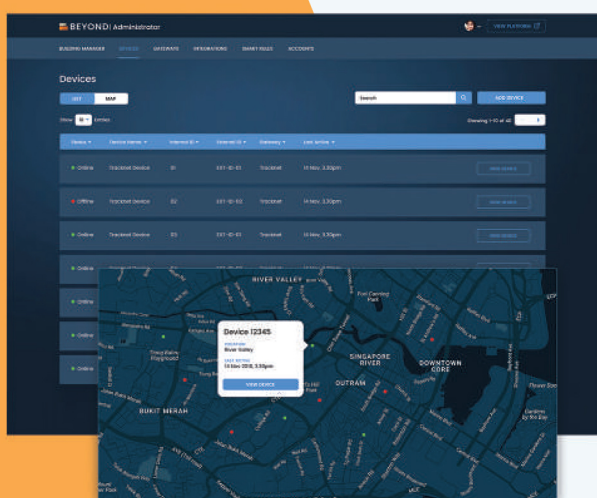
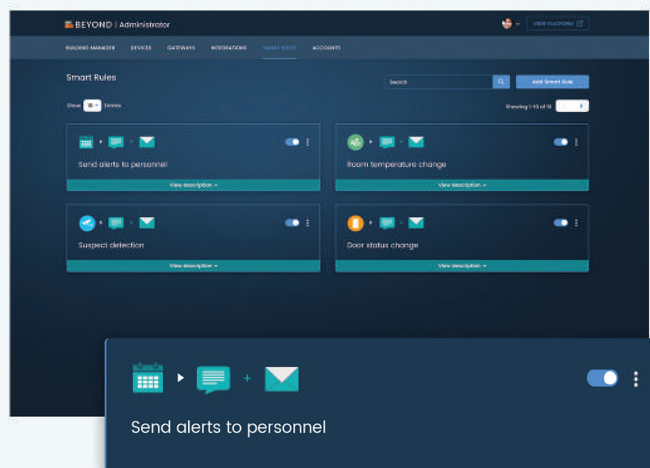


Mobile Operations

Beyond is a browser-based client for efficient, easy incident viewing and handling. Alert lists, details and supported video streams allow users to view information and video and easily share incident information from any Windows desktop with remote operators and mobile responders.

Rules & Workflows

With an advanced smart rules engine, Beyond as a PSIM allows managers and operators to customize their workflow processes and filter out the wrong alerts and highlight the right kind of alerts – vastly reducing the signal to noise ratio of security alerts that take place in the system. Beyond utilizes machine learning and a dynamic rules engine to create smart rules – eventually enabling buildings and properties to effectively run itself without human intervention.



Enterprise Readiness

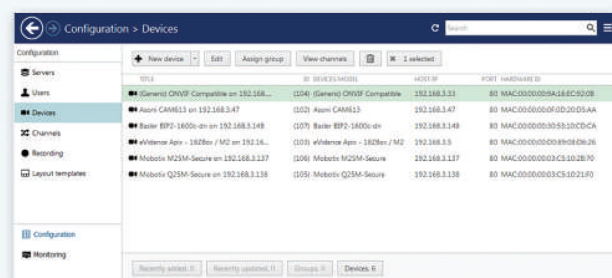
Beyond is Enterprise IT ready with load balancing, redundancy and failovers as an option for deployment. Beyond at its heart has a micro-services-oriented architecture which ensures that the system can be scaled up from a single server deployment through user-friendly installers – to a full-scale cloud-scale deployment with multiple servers in a data farm. In addition to this – operators will be able to monitor the health and operations of up to hundreds of thousands of devices on one system.

The system is also able to support selected Enterprise drones and bodycams through RTMP media server streaming support on Beyond Vision platform.



Multiple Camera Brand and Protocol Support

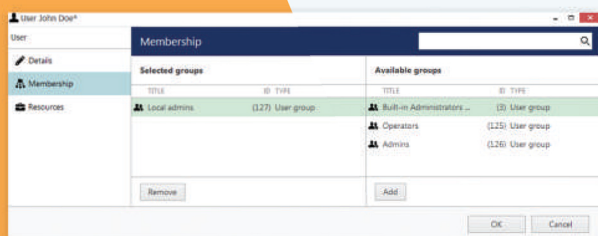
Beyond is compatible with multiple brands within the system and allows for the customer to add and remove cameras from many different brands. In addition – Beyond allows for compatibility with video encoders, NVRs, DVRs as well as MPEG-4, MJPEG, H.264, H264MP and ONVIF compression. Each camera is also able to be configured individually with its own streaming setting – allowing unprecedented control over your camera streams.



Enterprise Ready Users & Roles

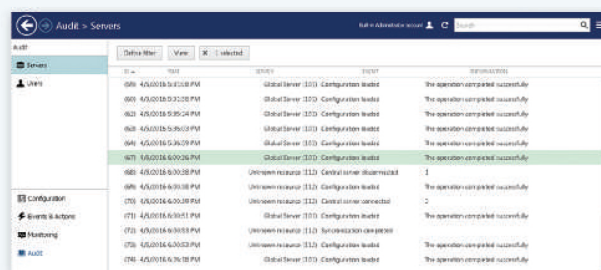
Beyond has support for different users and roles with a deep and comprehensive permissions systems – allowing managers to have complete control over what their operators can see and control in the system and allowing for them to structure their roles properly – assigning roles to supervisors, managers and operators.

Also – import and integrate user administration into Windows Active Directory and LDAP systems that already pre-exist in your Enterprise.



System and User Audit Logs

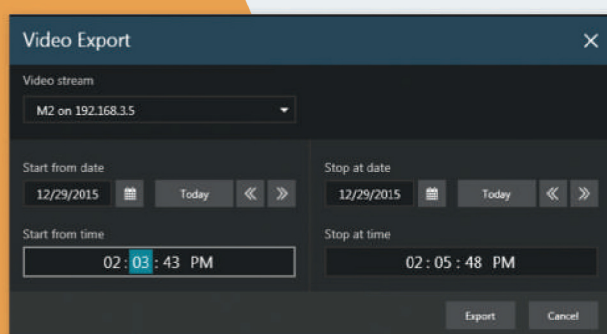
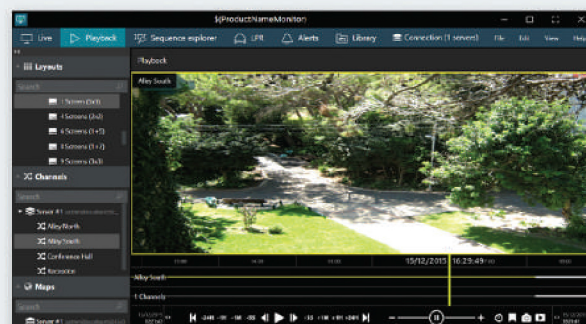
Prepare to have complete transparency in the system as Beyond records and stores all system and user actions in the database – allowing you to track all events, systems setting and users in the system.



Video Recording & Storage

Complete control over your video storage – allowing for control and allowing for your optimization of storage for your video feeds. This includes the ability to schedule recording times, motion control-based storage rules, and custom time-based rules and event-based recording.

In addition – playback of recordings and events is easy with a variety of ways to search through archives and events in the system – including by scrubbing, timeline, time, intelligent filters etc.

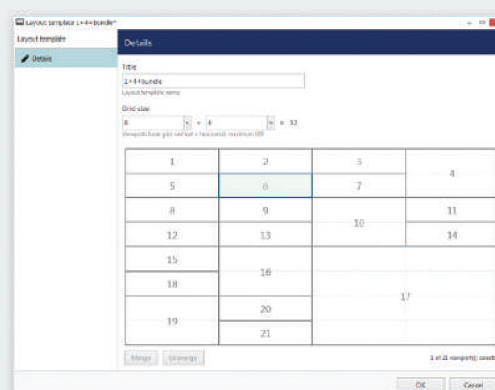


Video Export

Beyond optimizes in its own file format to help in quick playback and scrubbing of videos. In addition – the platform supports the export of videos to universally playable formats such as AVI, MPEG4 and H.264 and H.265 Codecs. This will ensure maximum compatibility on your workflows.

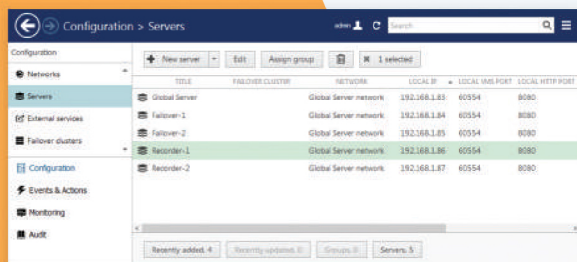
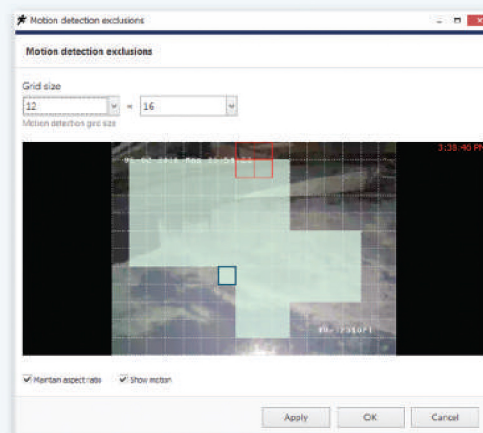
Layout Management

Complete control over how your camera feeds are laid out on the screen – share layout templates from the server and customize your own prepared views – from a single camera view to a hundred – and easily retrieve layouts based on names of locations.



Motion Detection Zones

Not just simple motion detection – Beyond allows setting of motion detection exclusion zones – with the ability to set the area to detect to reduce false positives and to improve the motion detection alarm to ensure that only important motion is reported.



Multi-Server & Site Support

Beyond platform supports failover and multiple servers – allowing operators to configure recording profiles across different servers and even different remote locations for fully redundant backups and archiving for more mission-critical functions.

Digital and Physical PTZ Support

Get control over the camera – either physically moving the camera or digitally moving the stream – including left-right rotation controls, rotary control and lens zoom controls. In cases where physical PTZ is not available – digital PTZ is supported including digital zooming in both live mode and playback mode.



Video Content Analytics

Real-time video analytics engine that utilizes advanced image processing algorithms to turn video into actionable intelligence. At the core is an advanced object tracking engine that continually tracks moving and stationary targets. The platform is highly effective in a wide range of surveillance situations involving people, vehicles and other objects. Comprehensive filters mean the system can recognize between behaviours appropriate to each surveillance scene.

License Plate Recognition

Our real time License Plate Recognition software will recognize license plates from vehicles from Singapore, Thailand, Malaysia and Indonesia among others. With advanced visual analytics and technology plug-ins - Beyond enables the recognition of plates, vehicle make & model and direction of vehicles that are on the move.

Supported Video Analytics

- Amount of detection zones
- Tamper detection
- Camera shake elimination
- Surveillance tracker
- Presence filter
- Enter/Exit, Appear/Disappear + Stopped filter
- Class and speed filters + calibration
- Direction and dwell filters
- Tailgating filter
- Abandoned object filter
- On-screen counters
- Object metadata
- Counting line

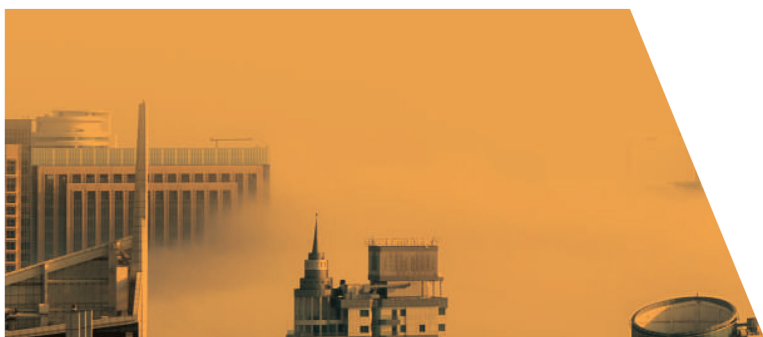
Supported License Plate Countries

Singapore, Malaysia, Thailand, Indonesia, Vietnam

Thailand License Plates

Reads Thai license plates issued by the Department of Land Transport in normal which consists of license plates (1-3 digits with Arabic numerals and characters), registration number (1-4 digits that are Arabic numerals) and province and can read license plate color.

The license plates must be license plate must be fixed in one prominent place in front of the car and at the back of a car and not be blocked.



Mapping & GIS

- Upload geographic map (GIS) or images in JPG, PNG format.
- Specify areas by drawing on the map and name the area freely.
- Display analytical results or quantity and density with Heat Map to measure the amount of traffic density.
- Measure the flow of people or objects both inside and outside the building.

Rules & Workflow

- Alert and show Standard Operation Procedures that have been set up by system administrators.
- Display events from multiple sources such as Fire Alarm / Perimeter Alerts / Access Control / Smoke Alarms / CCTV.
- Send relevant information or notifications to relevant parties with screen shots.
- Display the nearest CCTV to the scene with objects that are static or objects that move around the scene.
- Set notifications from the devices by connecting with Smart Rules, and set alerts by date and time,, compare data from various sensor data in the system with notifications via email, SMS, and on screen display.

Visualization & Reports

- Collect displays and analyze data by META-Data together with video analysis into a graph chart and visualize other data in real time, including showing the number of people or analysis data in a bar chart.
- Report can be displayed and exported in PDF, CSV and Excel format.
- Send reports via E-mail.

Video & Data Workflows

- Search for images, record videos with Forwards / Backwards commands.
- Supports **OPC** data.
- Supports profiles from many data sources including unicode, Thai (windows) and others.
- Image streaming encoding from RTSP to RTMP and can act as a streaming server to Wowza or other RTMP end-points.
- Specify conditions and settings for each camera and CCTV in the system.
- Notifications via email, with event images attachment.
- Notify in real time on the display screen.

Security Features

- Set passwords with advanced security for users by requiring a minimum password length, have special characters, have capital letters with lowercase letters, and has numbers as the components.
- Limit the number of concurrent logins from administrators.



External Systems Integration

- Link and display to digital signage systems such as Xibo and Targetr among others.
- Link and control Access Control Systems to control people coming in and out of a facility.
- Link to automatic emergency sound notification systems.
- Support for IP Camera video and audio for capabilities similar to Video Conferencing where Beyond speaks to your camera.

Video Search Features

- Process video files and summaries to analyze events from the CCTV system. as a Video Search Analytic Software.
- Search for special events from a video feed by color of the object, the type of object, and the position of the object. For example, search for wearing a blue jacket that is riding a bicycle.
- Uses compression technology to reduce bandwidth to make it easier to search for special events in the video.
- Download data in JPG and MP4 formats for further review.
- Allows for time lapsed Images when there are no movement or activity on CCTV to save data recording space.
- Uses machine learning to intelligently analyze events.
- Special search alerts can be set to send alerts when there are predefined events, for example sending notifications when people in red shirts walk through the entrance.
- Allow to speed up the video for searching or search in the past.

Face Recognition Features

- Detect and recognize faces (Facial Detection and Recognition) from CCTV video systems.
- Compare, recognize and search for human faces in real time.
- Notifications when blacklisted or white-listed faces are detected including VIPs
- Upload faces into a database and detect people based on images.
- Record faces into database based on recognition results.
- Process images from both internal and external cameras.
- Process faces on even when they are on the move.
- One to Many comparisons - compare 1 face to many faces in the database..
- Analyze age, sex and emotions of people from detected faces.
- Ranked Top 10 in NIST

Other Notable Features

- Software can be run in Oracle VirtualBox and VM Ware Workstation.
- ALPR: Vehicles can search for alarms by specifying the type of vehicles.
- ALPR: Vehicles can be entered and exited with time limits.
- ALPR: Clear Image system and converts image data to letters and numbers.
- ALPR: Detected images and license plate information can be sent to a central sever or cloud sever
- Face Recognition has option to support GPU processors for faster performance.
- Face Recognition can process images of faces of different nationalities.
- Can share the access rights freely.



Available Integrations

- Access Control
- Asset Tracking
- Biometrics
- Bluetooth iBeacons
- Building Management
- Computer-aided Dispatch
- Face Recognition Technology
- Fire Alarm
- Guard Tour
- Identity Management
- Intercom/Mass Notification
- Intrusion/Fire Alarms
- IT Systems
- Lift and Elevator Systems
- LORA IOT sensors
- Perimeter Alerts
- Radar/Sonar
- Sewage Systems and Equipment
- Trunk Radio
- Video Analytics
- Video & CCTV Management
- Video Wall
- Zigbee / Z-Wave Automation & Sensors

Minimum Systems Requirements (PSIM Server)

Processor	Intel Xeon with 8GB RAM
Operating System	Windows Server (x86/x64) Linux Centos Linux Ubuntu 14.04 Linux Red Hat
RAM	16GB
Database	MariaDB / MySQL Mongo DB

Minimum Systems Requirements (Video Server)

Processor	Intel Xeon with 16GB RAM
Operating System	Windows Server (x86/x64)

Minimum Systems Requirements (Client)

Processor	Intel i5 or Equivalent with 4GB RAM
Operating System	Windows 10
Client Application	Google Chrome Mozilla Firefox



Camera Support

4000+ models of network cameras and network video servers from over 140+ manufacturers, as well as fully ONVIF Profile S compliant – a most comprehensive choice available in the market that will ensure unlimited flexibility in the future and unlimited expansion possibility.

360 Vision	Beward	Etrovision	Panasonic	Tanz
3S Vision	Bolide	EverFocus	Partizan	Telefunken
3sVision	Bosch	eVidence	Pelco	Tenvis
4XEM	BrickCom	EyeView	Pinetron	Topview
A&H	Bulwark	Fine CCTV	Pixord	Toshiba
A+ Systems	CamTron	FineCCTV	Praxis	TRENDnet
ACTi	Canon	FlexWATCH	Probe	Truen
Acumen	ClareVision	Flir	PROVIDEO	TruHD
AirLink101	CNB	Forenix	Redvision	UDP
Airlive	Convision	Foscam	Rimax	Uniview
Appro	Cortex Connect	GANZ (CBC)	Riva	UTC Fire & Security
Aray	Costar	GeoVision	Samsung	Videonix-cctv
Arecont Vision	CP PLUS	Grandeye	Sanyo	Videoteknika
Arlotto	D-Link	Grandstream	Scallop Imaging	Vidux
Asoni	Dahua	Grundig	Secubest	Viotech
Auric	Digimerge	GSP America	Sharx	Visualint
Aver	Digital ID VIEW	HikVision	Smart Guard Systems	Vitek
Aviosys	DigiView	Hitachi	Smartec	Vivotek
AVTECH	DRS	Hitron	Solvitec	Wipro
Avycon	Dynacolor	HUNT	Sony	Y-Cam
Axis	Dynacom	I-Yahorng	SparkLAN	YOKO
Basler	Dynsa	iCanTek	Speco	Yudor
BestDigital	Ekin	ILDVR	StarDot	Zavio
	Eneo	Infinity	Sunell	etc.

Can work with IP / HD / 4K / Megapixel / Thermal / HD Analogue / Analogue / Fisheye CCTV cameras, at least 360 degree viewing angle.

